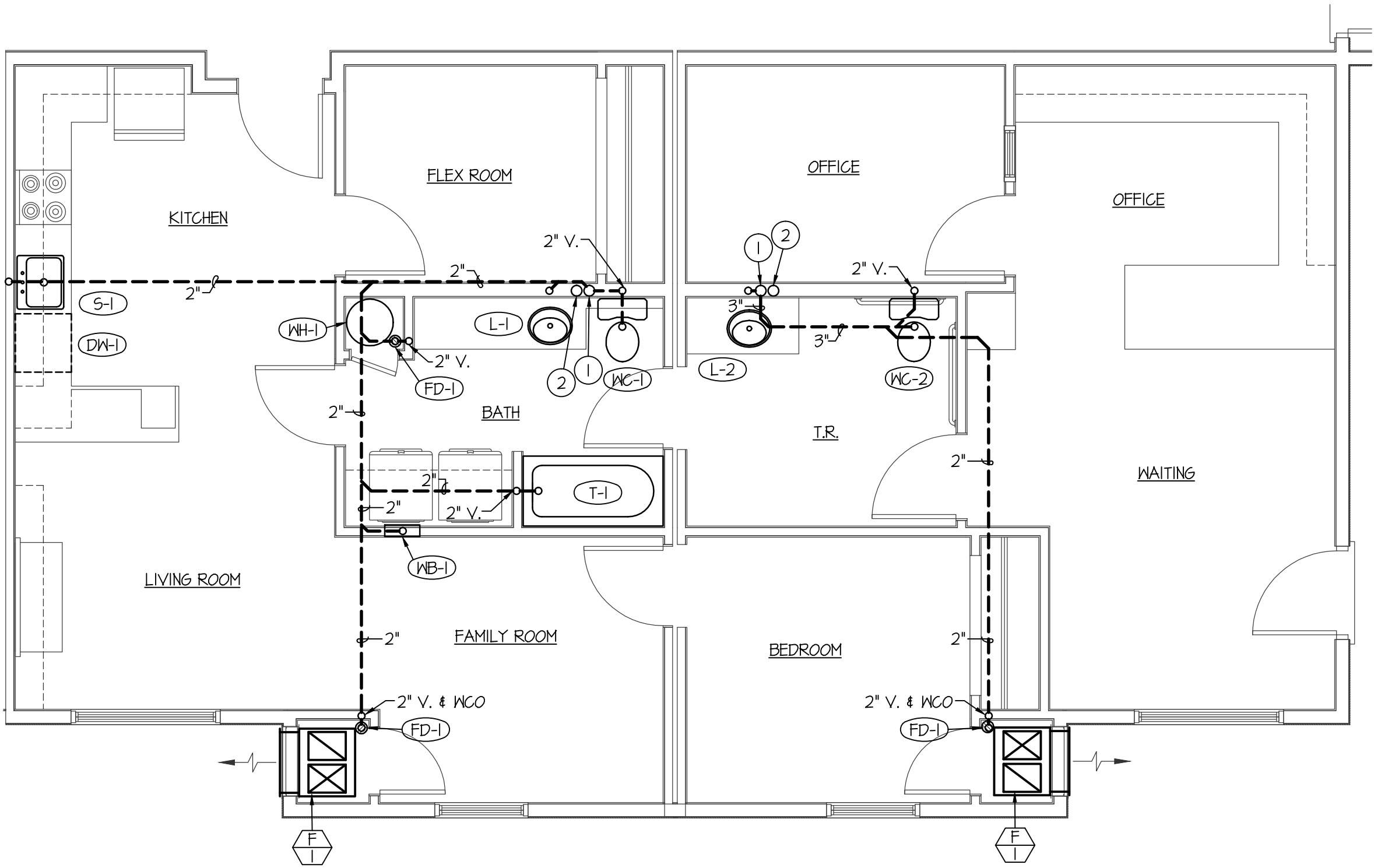
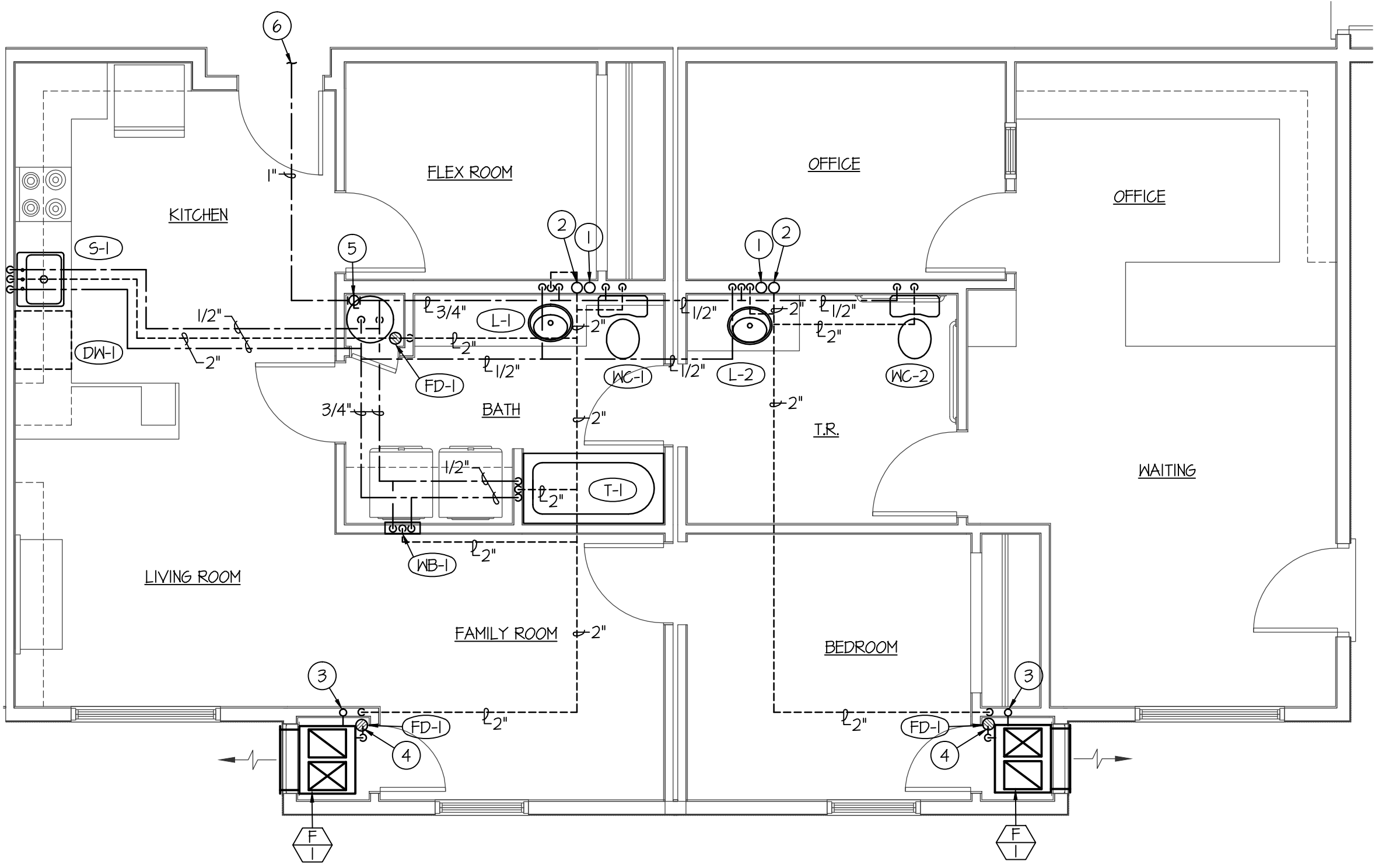


F:\17042 JUNIPER SANDS APTS\17042 P21.dwg Jun 14, 2017 - 3:22pm



MANAGER'S APT. / OFFICE AREA  
WASTE PIPING FLOOR PLANS

SCALE: 1/4" = 1'-0"



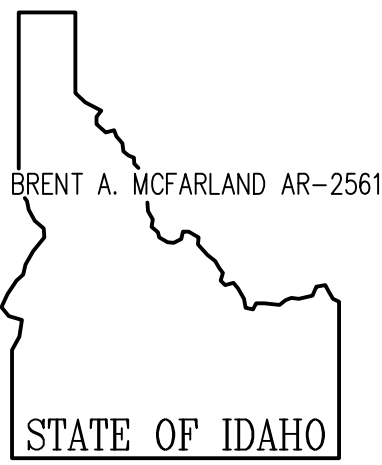
MANAGER'S APT. / OFFICE AREA  
WASTE PIPING FLOOR PLANS

SCALE: 1/4" = 1'-0"



PLAN NOTES:

- 1 4" WASTE STACK IN WALL SERVING 3 LEVELS OF FIXTURES. SEE BASEMENT PLUMBING PLANS FOR WASTE PIPING UNDERSLAB.
- 2 4" VENT STACK IN WALL SERVING 4 LEVELS OF FIXTURES.
- 3 DROP 3/4" GAS LINE DOWN TO SERVE FURNACE AND CONNECT. INSTALL SHUT-OFF VALVE, DIRT LEG AND FLEXIBLE CONNECTION AT UNIT. SEE DETAIL ON SHEET P3.0.
- 4 RUN 3/4" CONDENSATE DRAIN LINE FROM FURNACE F-1 TO FLOOR DRAIN LOCATED IN MECH. ROOM. TERMINATE WITH DOWNTURNED 90° ELBOW AND AIR GAP.
- 5 INSTALL 1" BALL TYPE SHUT-OFF VALVE ON CM MAIN SERVING EACH APT. IN ACCESSIBLE LOCATION ABOVE WATER HEATER IN CLOSET.
- 6 SEE PLUMBING FLOOR PLANS FOR CONTINUATION OF WATER PIPING.



CONSULTANTS:

PROJECT: JUNIPER SANDS APARTMENTS  
REXBURG, IDAHO  
DRAWING TITLE: MANAGER'S APT. LARGE SCALE PLUMBING PLAN

REVISION:

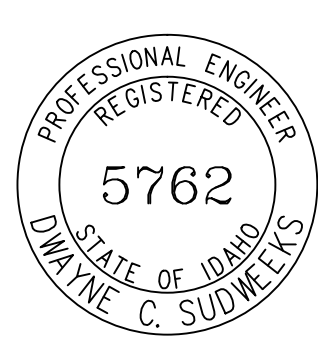
#	DATE	COMMENT
1	06/14/2017	ISSUED FOR PERMIT
2	06/14/2017	ISSUED FOR PERMIT
3	06/14/2017	ISSUED FOR PERMIT
4	06/14/2017	ISSUED FOR PERMIT
5	06/14/2017	ISSUED FOR PERMIT
6	06/14/2017	ISSUED FOR PERMIT
7	06/14/2017	ISSUED FOR PERMIT
8	06/14/2017	ISSUED FOR PERMIT
9	06/14/2017	ISSUED FOR PERMIT
10	06/14/2017	ISSUED FOR PERMIT

DRAWING NO. FILE: 17042 P21.dwg

P2.1

OF -

ORIGINAL DRAWING SIGNED BY: DWAYNE C. SUDWEEKS  
DATE ORIGINAL SIGNED: Jun 14, 2017  
ORIGINAL ON FILE AT ENGINEERED SYSTEMS ASSOCIATES  
1355 EAST CENTER, POCATELLO, IDAHO 83201



**Engineered Systems Associates**  
1355 EAST CENTER  
POCATELLO, IDAHO 83201  
PHONE: (208) 233-0501  
FAX: (208) 233-0529  
EMAIL: eso@engsystems.com  
ESA JOB NUMBER: 17042